

October 2023
Gavin Shirtcliffe

Developer Day



Unlocking Value from Smart Meters

There is more demand for water and less predictable supply

More people

There has been a **30%** increase in England's population from 1961 to 2021



Each using more water

Personal water use in the home has increased by over **60%** since the 1960s

Why?

Longer
over
summers

Summers will be **18%** drier
Winters will be **13%** wetter



By 2050

Shorter
wetter
winters



The future climate of North West England
The University of Manchester, June 2022

UU is committed to water sustainability in the North West



We need to use our water more sustainably and more responsibly. This means **using less and losing less**. UU is committed to further reducing leakage and encouraging water efficiency to help ensure future water resilience.

Leakage

Leakage

50% (~224 MI/d) reduction by 2050
(compared to 2017 levels ~449 MI/d)

PCC

Per Capita Consumption

110 litres/person/day by 2050

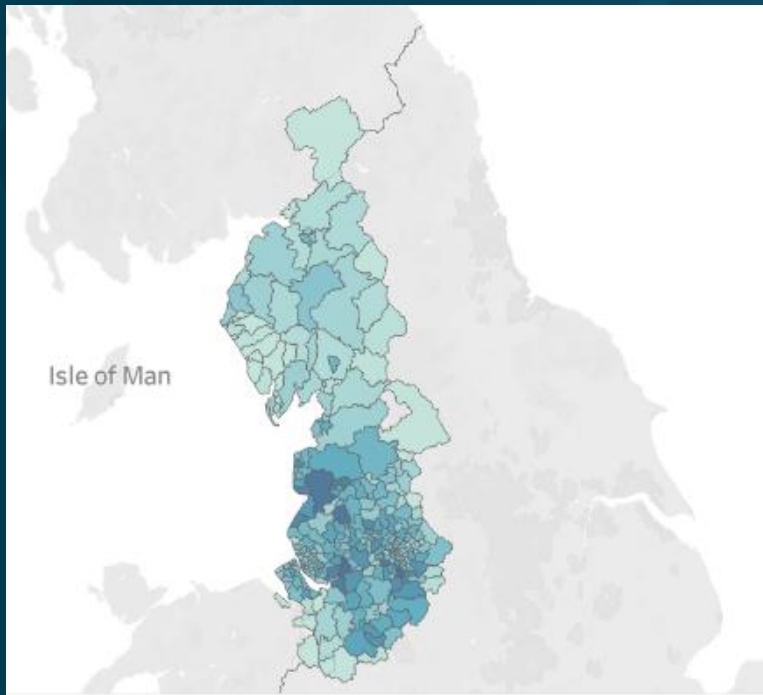
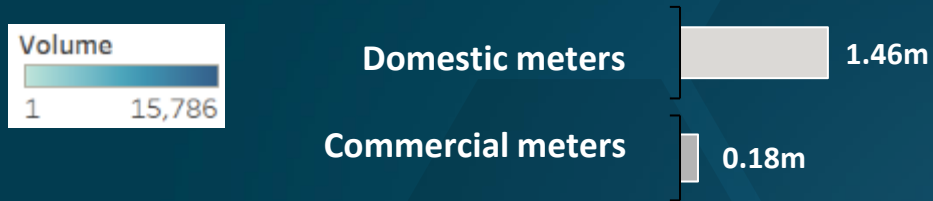
Business Usage

Business Usage reduction

8.3 % reduction by 2030
15% reduction by 2050

Current Metering Challenges in United Utilities

We operate 1.64m meters, 89% of which are domestic. These meters are concentrated in the south of our region

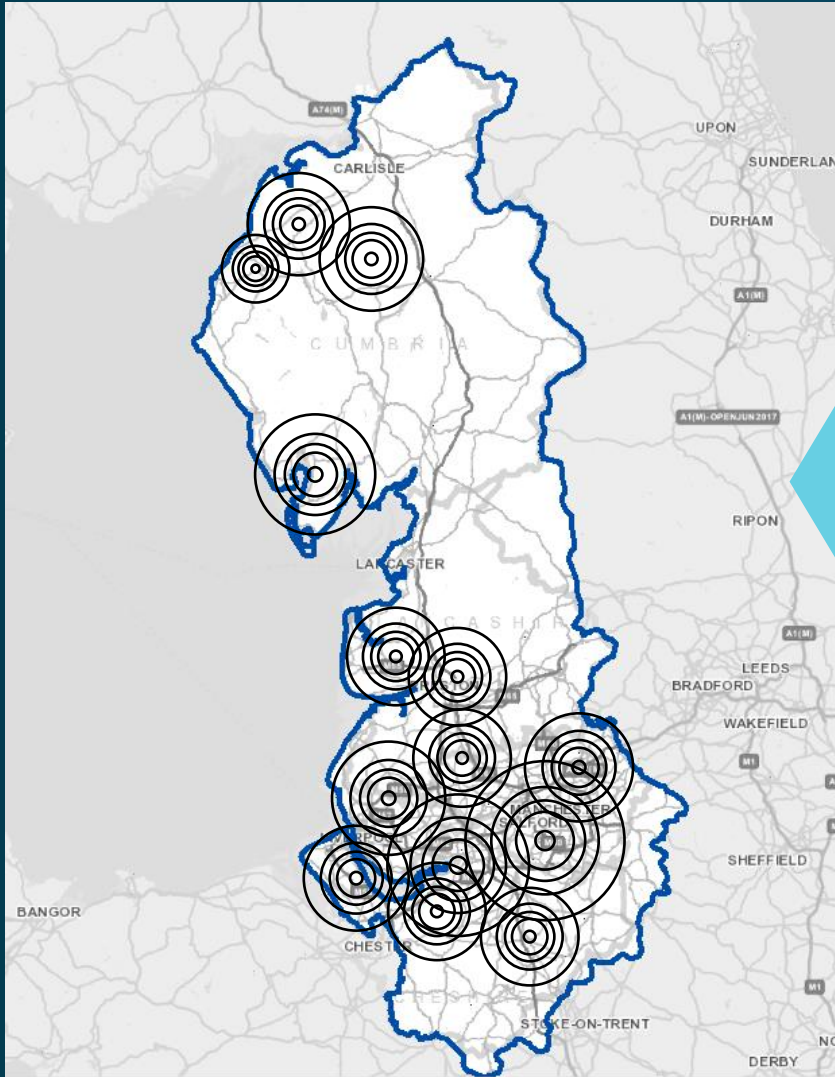


We have one of the lowest water company HH meter penetrations (49%) and have modest AMP7 growth (+6% meter penetration)



Our meters are either read visually
or
Utilise AMR technology with the ability to collect reads when driving or walking by

Smart meters will be installed in mass – The Smart meter data will support the reduction of water use and identify losses



Roll out
Advanced
metering
Infrastructure

New meter installs

- Customer Requested
- Enhanced Metering

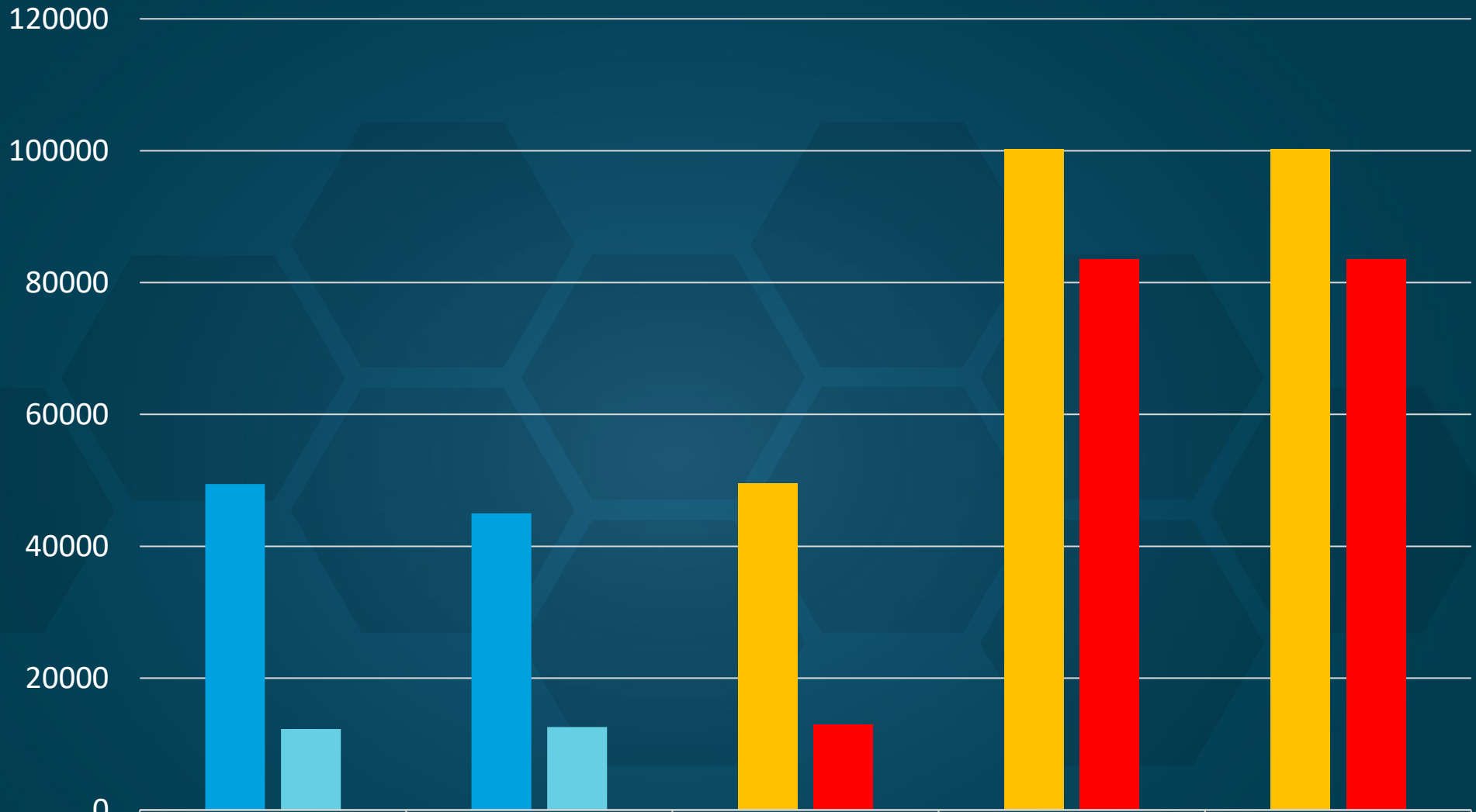
Renewals

- Fix on Fail
- Pro-active

New Connection

- Efficient homes

United Utilities - Metering Work volumes



	22/23	23/24	24/25	25/26	26/27
New Installations	49449	45009	49555	100228	100226
Renewals	12298	12585	12965	83596	83591

**What does
this mean to
you?**

Different
Metering
Technology

Incentives to
build more
efficient
homes

Review of Meter
location policy
for Smart
Technology
Rollout

Review of Meter
location policy
for Smart
Technology
Rollout

Ease of
Installation

Ability to
procure
directly



Meter Location policy review?

Above ground meter
external to the
dwelling?

Above ground level -
Communal areas in
apartments

Benefits to consider

- Leakage – continuous supply pipe from main
- Reduced Property damage during build stage
- HBF and Water UK best practice guidelines
- Replacement – reduced customer impact
- Smart Technology connectivity

Challenges

- Product choice - sole active supplier
- Importance of correct installation - Training
- Supply pipe through wall structure - disruptive to alter
- Different wall structures/rendering

Formal Industry Consultation
(Please Respond!)

