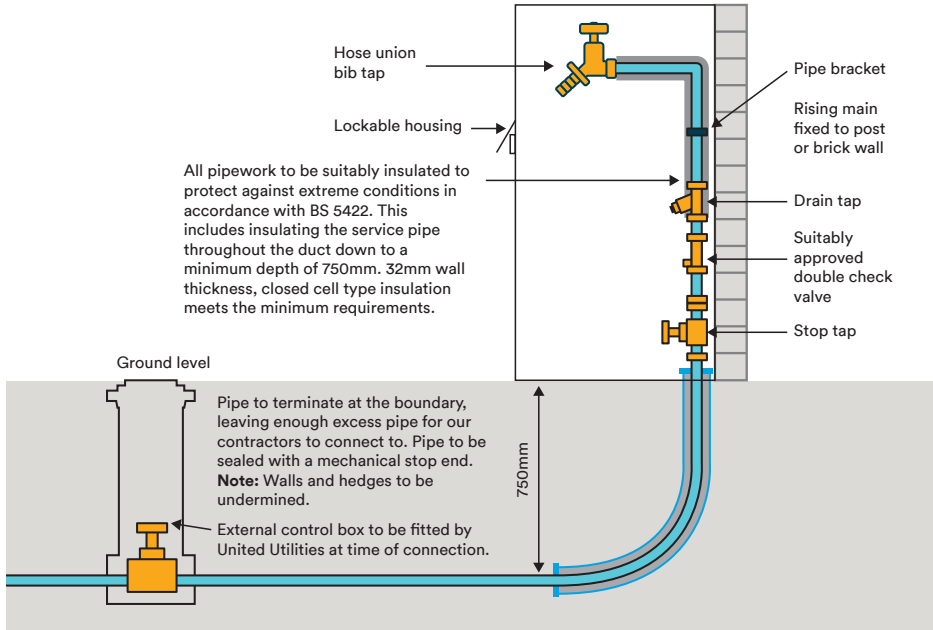
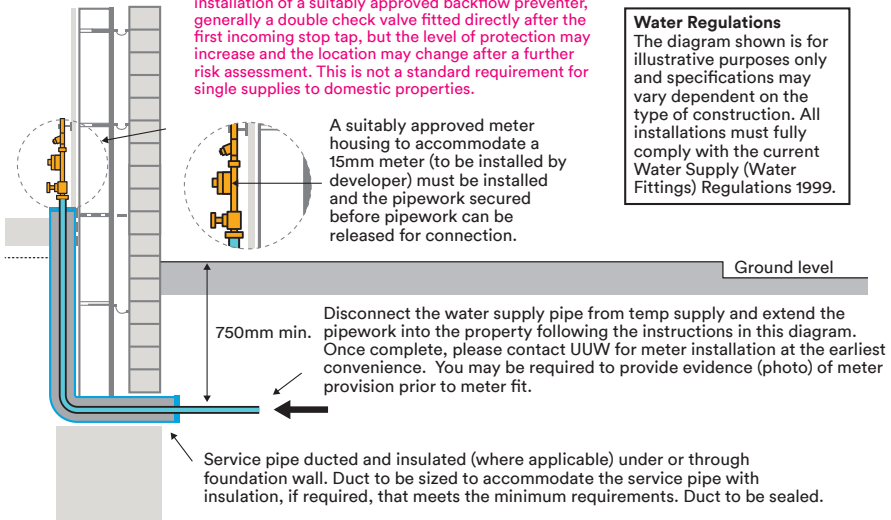


Temp to perm metered internally



Important: All commercial connections will require the installation of a suitably approved backflow preventer, generally a double check valve fitted directly after the first incoming stop tap, but the level of protection may increase and the location may change after a further risk assessment. This is not a standard requirement for single supplies to domestic properties.

Water Regulations
The diagram shown is for illustrative purposes only and specifications may vary dependent on the type of construction. All installations must fully comply with the current Water Supply (Water Fittings) Regulations 1999.



Temp to perm metered externally

